

# MONTHLY MEMBERSHIP PROGRESS REPORT

LOCATION MINNESOTA

District 5M 10

Results as of: 6/30/2023

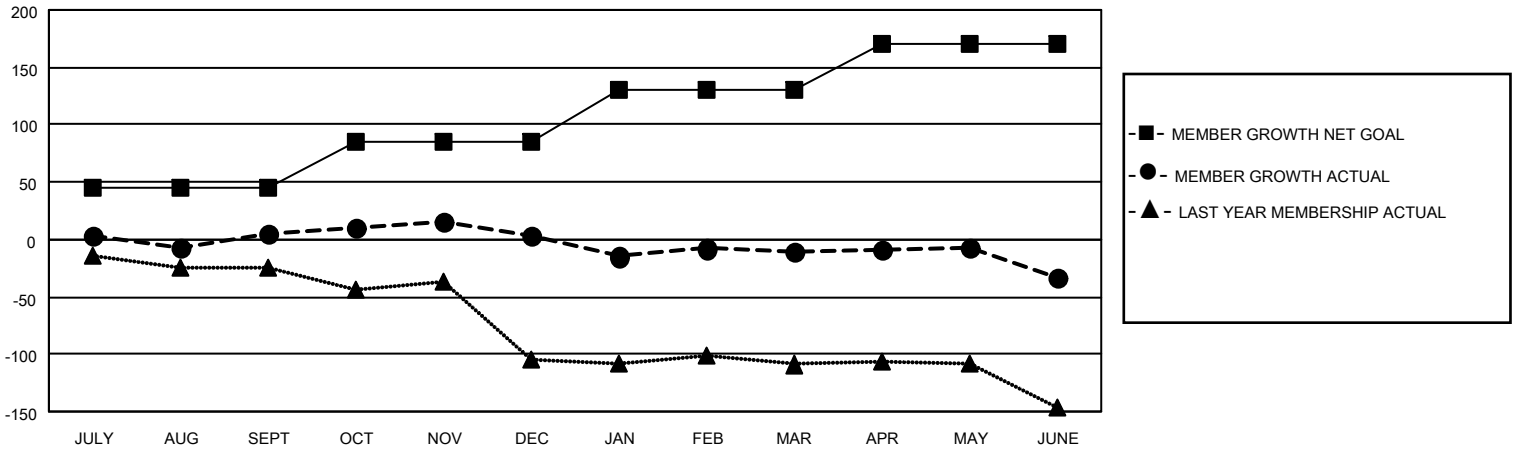
Clubs			
RESULTS FOR 2022-2023			
QUARTER	NEW CLUB GOAL	NEW CLUBS	DROPPED CLUBS
JULY/AUG/SEPT	0	0	1
OCT/NOV/DEC	0	0	1
JAN/FEB/MAR	1	0	1
APR/MAY/JUNE	0	0	0

Members			
RESULTS FOR 2022-2023			
QUARTER	MEMBER GROWTH NET GOAL	MEMBER GROWTH ACTUAL	DROPPED MEMBERS ACTUAL (including transfers)
JULY/AUG/SEPT	45	43	32
OCT/NOV/DEC	40	19	21
JAN/FEB/MAR	45	39	51
APR/MAY/JUNE	40	52	54

**GOALS AND ACTUAL NEW CLUBS CUMULATIVE**



**GOALS AND ACTUAL MEMBERS CUMULATIVE**



**DROPPED CLUBS: 3**

**29 CLUBS OF 43 ADDED 1 OR MORE NEW MEMBERS**

**GENDER DISTRIBUTION**

MALE	557 (52.55%)
FEMALE	503 (47.45%)
NON BINARY	0 (0.00%)
PREFER NOT TO ANSWER	0 (0.00%)

**DROPPED MEMBERS**

[CLICK HERE FOR CUMULATIVE MEMBERSHIP DATA](#)

DECEASED	20
CLUB CANCELLED	27
OTHER	111
<b>TOTAL</b>	<b>158</b>

TOTAL FAMILY UNIT MEMBERS 266

FAMILY MEMBERS PAYING HALF DUES 135